

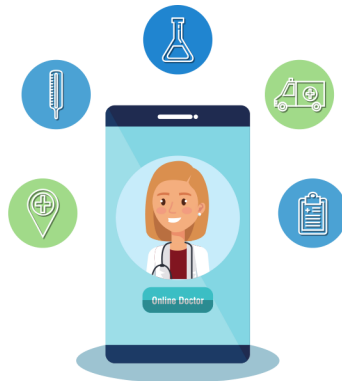
Membership Offerings

The Center for Telehealth and eHealth Law (CTeL), is a 501(c)3 digital health research institute, with nearly 30 years of experience. Our membership organization **unites** the digital health community to drive telehealth, remote monitoring, AI, and advancing technologies into the future. Our research and networking opportunities shape impactful policy and legislative advancements while fostering equitable and **high-quality digital health care accessible to all.**

We're here to help you navigate the complex digital health legal, regulatory, and policy landscape.

Our focus areas include:

- ✓ **Telehealth**
- ✓ **Remote Monitoring**
- ✓ **Artificial Intelligence**



Why Choose CTeL



We Do the Nerdy Work For You.

CTeL is a trusted, digital health policy research institute with nearly 30 years of experience. Our mission is to bring the right information to the right people, putting the data to work to drive change where it makes a difference.



We Know Who You Want to Know.

CTeL membership provides you access to decision makers in a variety of markets including academia, health systems, government relations, provider organizations, cybersecurity, medical malpractice insurance, and more.



We're Here for You.

CTeL is designed to be an extension of your team, we work collaboratively to meet the needs of it's members and the broader digital health community.

What We Offer

Research

- Digital Health Research Library
- Personal Research Advisor
- Growth Development Partner

Policy

- Policy Education, Analysis and Debriefs at the State and Federal Level
- Engagement and Collaboration with Congress and Administration
- Up-to-Date Legislative Tracking

Action

- Digital Health Summits | Fall and Spring
- Topic Specific Working Groups
- Networking Dinners and Events

Education

- Digital Health Policy Certificate Program
- Access to Experts | Legal Resource Team and Advisory Board
- Blue Ribbon Collaborative

Investment

CTeL Membership offers an unmatched collection of benefits, specifically designed with the diverse digital health market in mind. The offerings and advancements gained through CTeL membership, are priceless, but we understand the varying needs of our members, which is why CTeL is pleased to offer membership at a variety of levels:



Recommended

Individual \$3,780

Includes:

Benefits for 1 Member:

- 2 In-person Summits (Fall/Spring) and networking events

Virtual Events:

- Virtual summits, "Hearings" from the hill, webinars, working groups, etc.

Digital Resources:

- Research, fact sheets, educational offerings

Access to Legal Resource Team, Blue Ribbon Collaborative, CTeL Staff and Advisory Board

Institutional \$10,000

Includes:

Benefits for up to **3 Members** for In-person events including:

- 2 In-Person Summit Events (Fall/Spring) and Networking Events

Benefits for up to **5 Members** for:

Virtual Events:

- Virtual Summits (2 a year), "Hearings" from the Hill, webinars, and working groups

Digital Resources:

- Research, fact sheets, and educational offerings

Access to Legal Resource Team, CTeL Staff, Blue Ribbon Collaborative, and Advisory Board

Unlimited \$17,000

Includes:

Benefits for unlimited Members for In-person and Virtual events including:

- 2 In-Person Summit Events (Fall/Spring) and Networking Events

Virtual Events:

- Virtual summits, "Hearings" from the hill, webinars, working groups, etc.

Digital Resources:

- Research, fact sheets, educational offerings

Access to Legal Resource Team, Blue Ribbon Collaborative, CTeL Staff and Advisory Board



Questions?

We are always happy to answer any questions you have about CTeL, our work, and our membership opportunities. Send us an email at info@ctel.org or call us at 202-499-6970.